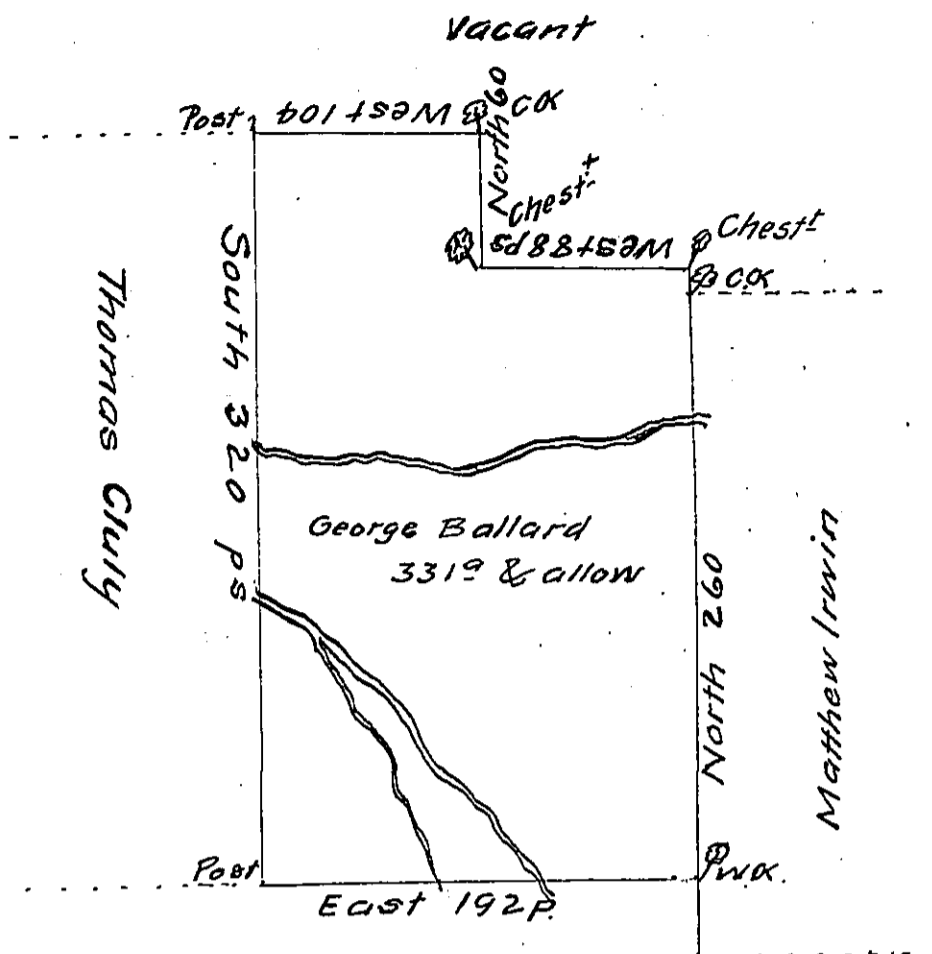


FORM NO. 1.



A Draught of a tract of Land called _____ Situate on the East side of the North East Branch of Susquehanna River about three or four miles from where James Logan lives and about twelve miles from Sunbury in the County of Northumberland containing Three hundred and thirty one acres besides the usual allowance of six p cent for Roads &c.

Surveyed the 20th day of December 1773 for George Ballard in pursuance of a Warrant dated the 17th day of September 1773.

To _____ by Cha^s. Stewart D^y Sur^t.
John Lukens Esq^r. Survey^r. Gen^l.

IN TESTIMONY that the above is a copy of the original remaining on file in the Department of Internal Affairs of Pennsylvania, made conformably to an Act of Assembly approved the 16th day of February, 1833, I have hereunto set my Hand and caused the Seal of said Department to be affixed at Harrisburg, this Twenty ninth day of August 1911

Henry Houck.
Secretary of Internal Affairs.